



ARSENIC REMOVAL MEDIA

ATOMUS Z21® Arsenic Removal Media, is a binary mixed metal adsorption media uniquely formulated to remove Arsenic from drinking water. With large, solid, high surface area granules, ATOMUS® Z21 media has demonstrated twice the arsenic loading capacity, longer life and shorter reaction time (EBT) than other arsenic removal medias.

Ideal for medium to high flow rate applications up to 2,000 gpm. ATOMUS® Z21 is NSF 61 certified and delivers unmatched performance than other arsenic adsorption media.

- Unparalleled non-leachable Arsenic bond
- Removes Arsenic III & V simultaneously
- NSF 61 certified for drinking water use
- Non-toxic – Media has passed USEPA TCLP and California wet tests*
- Imparts no odors, taste or color to water
- pH range greater than any other Arsenic adsorption media
- Least impacted by competing ions like Silica, Phosphorus or Vanadium

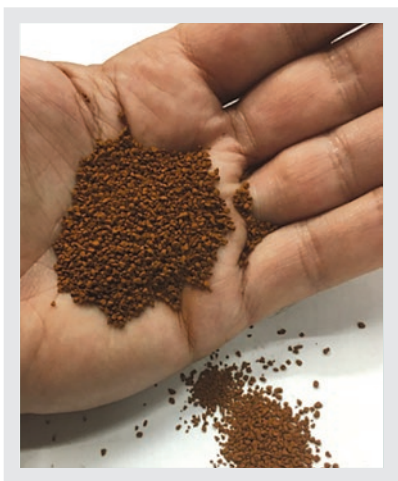


High-capacity tanks manufactured to specific application requirements

Media Specifications:

System Type:	Granular media in pressure vessels	Contaminant Removal:	Arsenic III & V, plus phosphate, chromium, selenium, fluoride
Media Type:	Patented Binary Metal adsorption media	Backwashing:	Monthly
Surface Area:	Greater than 200 m ² /g	pH range:	5.5 – 10.5
Bulk Density (weight):	48 lbs./Cubic ft.	pH Zero point-of-charge: (ZETA point)	12
Minimum Empty bed contact time (EBCT):	2.5 to 3 minutes	Media Disposal:	Landfill*
Surface Loading Rate:	7-9 gpm/ft ²	Pressure Drop:	Less than 10 psi
Particle Size:	10 x 65 mesh	Cost per Gallon Treated:	Low

* USEPA TCLP tested as non-hazardous waste safe for landfill, but due to variances in influent water quality, users are urged to perform independent verification of the non-hazardous character of spent media cartridges. Additionally, some states may have disposal criteria different from Federal guidelines (TCLP).



Atomus Z21® Arsenic removal granules



Certified to
NSF/ANSI 61

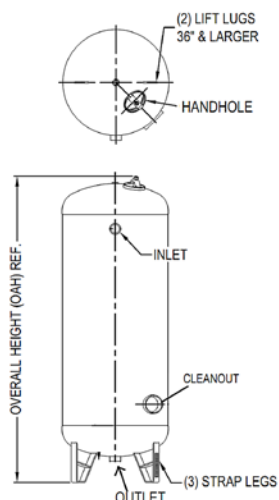
CARBON STEEL TREATMENT VESSELS

Designed for use with **ATOMUS[®] Z21 Bulk Granular Adsorption Media**

- NSF/ANSI 61 certified interior coating
- Carbon steel construction
- Coated finish in "Safety Blue" epoxy
- 100 PSIG working pressures
- 150 PSIG is available
- Seismically rated supports (optional)
- ASME Code available on request
- Custom sizes available



10 Standard vessel sizes from 20"–72" for a wide range of applications. Custom high-capacity tank sizes also available



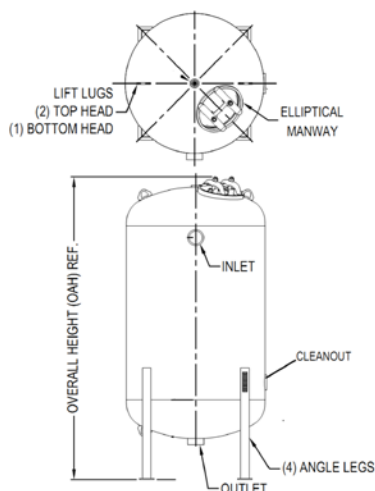
Standard Capacity Vessels

MODEL NO.	DIAMETER	HEIGHT (OVERALL)	VOLUME (GAL)	MEDIA (CUBIC FT.)	INLET/OUTLET
2060LC	20"	76"	85	6	2" NPS*
2460LC	24"	78"	124	9	2" NPS
3060LC-3	30"	85"	205	14	3" NPT**
3672LC	36"	101"	350	20	3" NPT
4272LC	42"	103"	484	28	3" NPT

*(NPS) National Pipe Straight ** (NPT) National Pipe Threaded



All vessel sizes include precision stainless steel internal distributors



High-Capacity Vessels

MODEL NO.	DIAMETER	HEIGHT (OVERALL)	VOLUME (GAL)	MEDIA (CUBIC FT.)	INLET/OUTLET
4872LC	48"	111"	660	36	4" NPT
5472LC	54"	113"	848	46	4" NPT
6072LC	60"	115"	1060	8	4" NPT
6672LC	66"	115"	1276	70	4" NPT
7272LC	72"	119"	1568	84	4" NPT

*(NPS) National Pipe Straight ** (NPT) National Pipe Threaded



Certified to
NSF/ANSI 61