

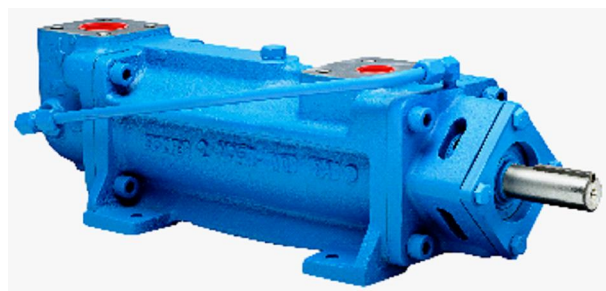
12L SERIES PUMP

THREE-SCREW PUMPS STANDARD PRODUCT SPECIFICATIONS



12L series pumps have become the world standard for mining industry applications. They are designed for high pressure applications such as compressor gas sealing, hydrostatic bearings and fluid power services. Operating noise levels are typically below 75 dBA at full pressure and two pole motor speeds.

The cast steel case and balanced shaft seal with carbon on carbide faces are intended to offer compliance with API requirements. Pump inlet port is rotatable in 90 degree increments to suit piping layouts. The pump includes mating carbon steel SAE 4-bolt, 6000 PSI rated socket weld flanges. Pump casing is hydrostatic tested to 7500 PSIG.



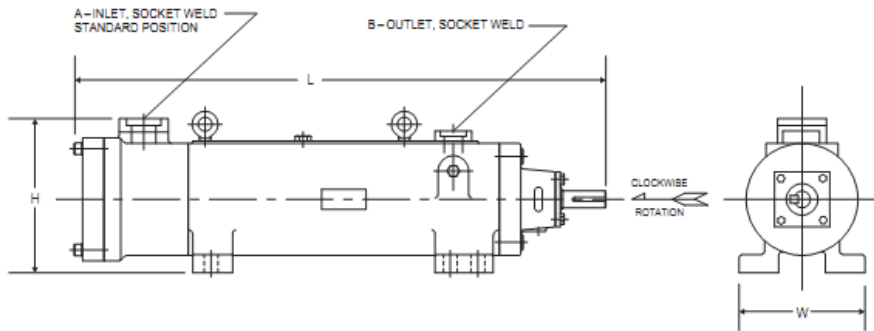
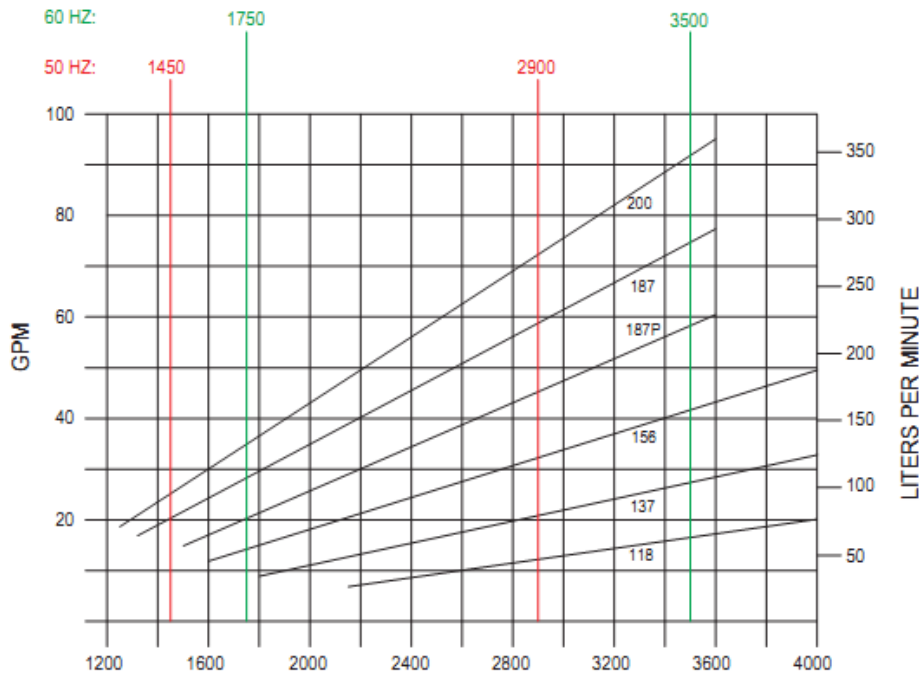
High Pressure Lube Oil Pumps for Mining Applications

PRODUCT SPECIFICATIONS

Casing	Cast steel.
Rotor housing	Babbitt plated pearlitic cast iron.
Power rotor	Alloy steel, nitrate hardened and thread ground.
Idler rotor	Pearlitic ductile iron, hardened and thread ground.
Gaskets	Fluoroelastomer.
Seal	Balanced metal bellows mechanical seal with carbon on carbide faces.
Outlet pressure	4,500 PSIG (310 BAR) maximum, 4,000 PSIG (276 BAR) maximum for sizes 118. Minimum recommended differential pressure is 40 psi (2.8 BARR).
Inlet pressure	200 PSIG (13.8 BAR) maximum.
Viscosity	45 to 3,000 SSU
Temperature	0 to 250° F (-18 to 121° C)
Maximum Speed	See performance chart.
Mounting	May be foot mounted in any orientation.

PERFORMANCE CHART

Shown at 3000 PSID (207 BAR), 200 SSU (43 CST)



SIZE	A		B		H		L		W		WEIGHT	
	INCH	MM	INCH	MM	INCH	MM	INCH	MM	INCH	MM	LBS.	KG
118	1.50	38.1	1.00	25.4	5.75	147.0	26.75	680.0	8.50	216.0	230	105
137/156	1.50	38.1	1.25	31.8	6.00	153.0	33.75	858.0	11.50	293.0	360	164
187/200	2.00	50.8	1.50	38.1	7.00	178.0	42.75	1086.0	13.00	331.0	580	264

FOR MORE INFORMATION CONTACT:
 APPLIED PROCESS EQUIPMENT, INC.
 9332 N 95th Way
 Scottsdale, AZ 85258
 480-998-4097, sales@apewater.com

Stocking distributor for IMO pumps & repair kits