

# PolyMark™ Polymer Blending

## The Ultimate Polymer Dosing System

The M.W. Watermark PolyMark™ integrates the best features and designs developed and refined from decades of experience. The PolyMark™ is a combination of proven polymer blending technologies and today's latest in flow and integrated control devices.

M.W. Watermark offers a complete line of blending units ranging from 25 gph to 2400 gph solution flow rates with 0.05 gph to 60 gph neat polymer flow rates to meet all of your process, dewatering, and flocculation needs.

## Parts

PolyMark™ polymer blender parts are interchangeable with existing leading brand units. Many parts are in-stock and can ship the same day. Contact M.W. Watermark for a complete list of replacement parts.

## M.W. Watermark

M.W. Watermark is a leading supplier of water and wastewater equipment, parts, and service. We serve both municipal and industrial markets globally.

Our team strives to provide unmatched service and value to customers, helping reduce their costs while keeping the environment clean.

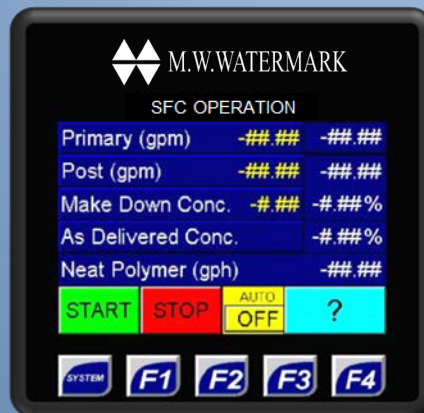
Contact us for more information.

**M.W. Watermark**  
4660 136<sup>th</sup> Avenue, Holland, MI 49424  
Office: 616.399.8850 Fax: 616.399.8860  
mwwatermark.com  
info@mwwatermark.com

Representing the latest in flow control, polymer metering, and integrated controls:

- Superior Controls Flexibility
- Unmatched Quality
- World-Class Service

The PolyMark™ is the industry's best value, packed with features to optimize polymer consumption.



The PolyMark™ controller integrates state of the art components to provide the user with critical control feedback and optimum polymer dosage.

