

ISOLUX[®] ARSENIC REMOVAL Pure & Simple



A New Cartridge System!

ISOLUX[®] is a new, user-friendly zirconium adsorption technology for eliminating arsenic from drinking water. There are system sizes from 5 GPM residential all the way to 300 GPM industrial applications. ISOLUX[®] features safe and easy to handle cartridges containing the patented ISOLUX[®] media for the reliable simultaneous removal of both Arsenic III and Arsenic V.

Cost effective!

Easy, fast installation.

No complicated maintenance or media replacement.

No Backwashing.

Non-toxic. Quick, easy garbage bin spent cartridge disposal.*

No Wasted Water like RO Systems!

Fast kinetics! 90% removal in first 15 seconds.
Media NSF 61 certified for drinking water use.
Manufactured in the U.S.

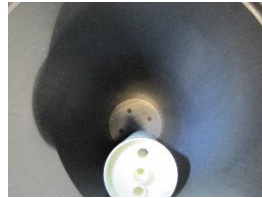
* Due to variances in influent water quality, users are urged to perform independent verification of the non-hazardous character of spent media cartridges. Additionally, some states may have disposal criteria different from Federal guidelines (TCLP).

ISOLUX[®]

ARSENIC REMOVAL Pure & Simple



ISOLUX cartridges only weigh 21 lbs. each and can be installed or removed by one person.



Cartridges are easily fit over male post guides.



Once cartridges are installed, just close the lid, tighten lock-down bolts, and start.



Spent cartridges can be disposed of safely and easily in your garbage bin**, but can also be returned to ISOLUX for re-processing if required.

	5 GPM System	10 GPM System	20 GPM System	50 GPM System	100 GPM System
Contaminant removal:	Arsenic III & V	Arsenic III & V	Arsenic III & V	Arsenic III & V	Arsenic III & V
Max. flow rate:	5 gpm	10 gpm	20 gpm	50 gpm	100 gpm
# of Vessels:	1	2	1	1	2
# of Cartridges:	1 Replaceable	2 Replaceable	4 Replaceable	9 Replaceable	18 Replaceable
Media bed residence time:	~27 Seconds	~27 Seconds	~27 Seconds	~27 Seconds	~27 Seconds
Pressure drop:	~ 30 psi max.	~ 30 psi max.	~ 30 psi mxax.	~ 30 psi max.	~ 30 psi max.
*Typical media life:	Change residential application media cartridges annually. Commercial and industrial applications require a complete water analysis review at cartridge change-out.				
pH range:	7 – 8.5 pH	7 – 8.5 pH	7 – 8.5 pH	7 – 8.5 pH	7 – 8.5 pH
Pre-filter (included):	10" 1-micron standard cartridge	20" 1-micron standard cartridge	20" 1-micron standard cartridge	1-micron bag type	1-micron bag type
Totalizing flow meter (included):	Positive displacement, 0.75"	Positive displacement, 0.75"	Positive displacement, 0.75"	Positive displacement, 2"	Positive displacement, 2"
Check valve:	PVC ball check, ¾"	PVC ball check, ¾"	PVC ball check, 1"	Check Valve, 2" , model 80E, unleaded brass	Check Valve, 2" , model 80E, unleaded brass
**Cartridge disposal:	Garbage bin or landfill.	Garbage bin or landfill.	Garbage bin or landfill.	Garbage bin or landfill.	Garbage bin or landfill.
System footprint:	8"W x 8"L x 60"H	12"W x 24"L x 60"H	20" OD x 62" H	48" W x 48" L x 63" H	48" W x 48" L x 63" H
Vessel size:	6.5" OD x 48" H	6.5" OD x 48" H	12.8" OD x 48" H	20" OD x 48" H	20" OD x 48" H
Vessel construction:	100 psi, 6.5" Sch. 80 PVC	100 psi, 6.5" Sch. 80 PVC	100 psi, 12" Sch. 80 PVC	100 psi, rated carbon steel with NSF grade epoxy coating	100 psi, rated carbon steel with NSF grade epoxy coating
Cartridge size:	4.5" OD x 42" L	4.5" OD x 42" L	4.5" OD x 42" L	4.5" OD x 42" L	4.5" OD x 42" L
Cartridge dry weight:	21 lbs. <i>(estimated wet weight 35 lbs.)</i>	21 lbs. <i>(estimated wet weight 35 lbs.)</i>	21 lbs. <i>(estimated wet weight 35 lbs.)</i>	21 lbs. <i>(estimated wet weight 35 lbs.)</i>	21 lbs. <i>(estimated wet weight 35 lbs.)</i>
System Shipping weight (dry):	50 lbs.	100 lbs.	150 lbs.	1,000 lbs.	1,500 lbs.
Operating weight:	70 lbs.	130 lbs.	250 lbs.	2,500 lbs.	3,200 lbs.
Outlet connection:	¾" PVC	¾" PVC	1" FPT	2" FPT	2" FPT
Inlet connection:	¾" PVC	¾" PVC	1" FPT	2" NPT	2" NPT
Booster pump:	Can be supplied if required	Can be supplied if required	Can be supplied if required	1.5 hp, 1 ph, 115/208/230 v	3 hp, 1 ph, 115/208/230 v

* Actual media life will be site specific depending on trace metal ion levels and background water quality. ** Due to variances in influent water quality, users are urged to perform independent verification of the non-hazardous character of spent media cartridges. Additionally, some states may have disposal criteria different from Federal guidelines (TCLP).

9332 N. 95th Way, Suite 106
Scottsdale, AZ 85258
480-998-4097
sales@apewater.com

